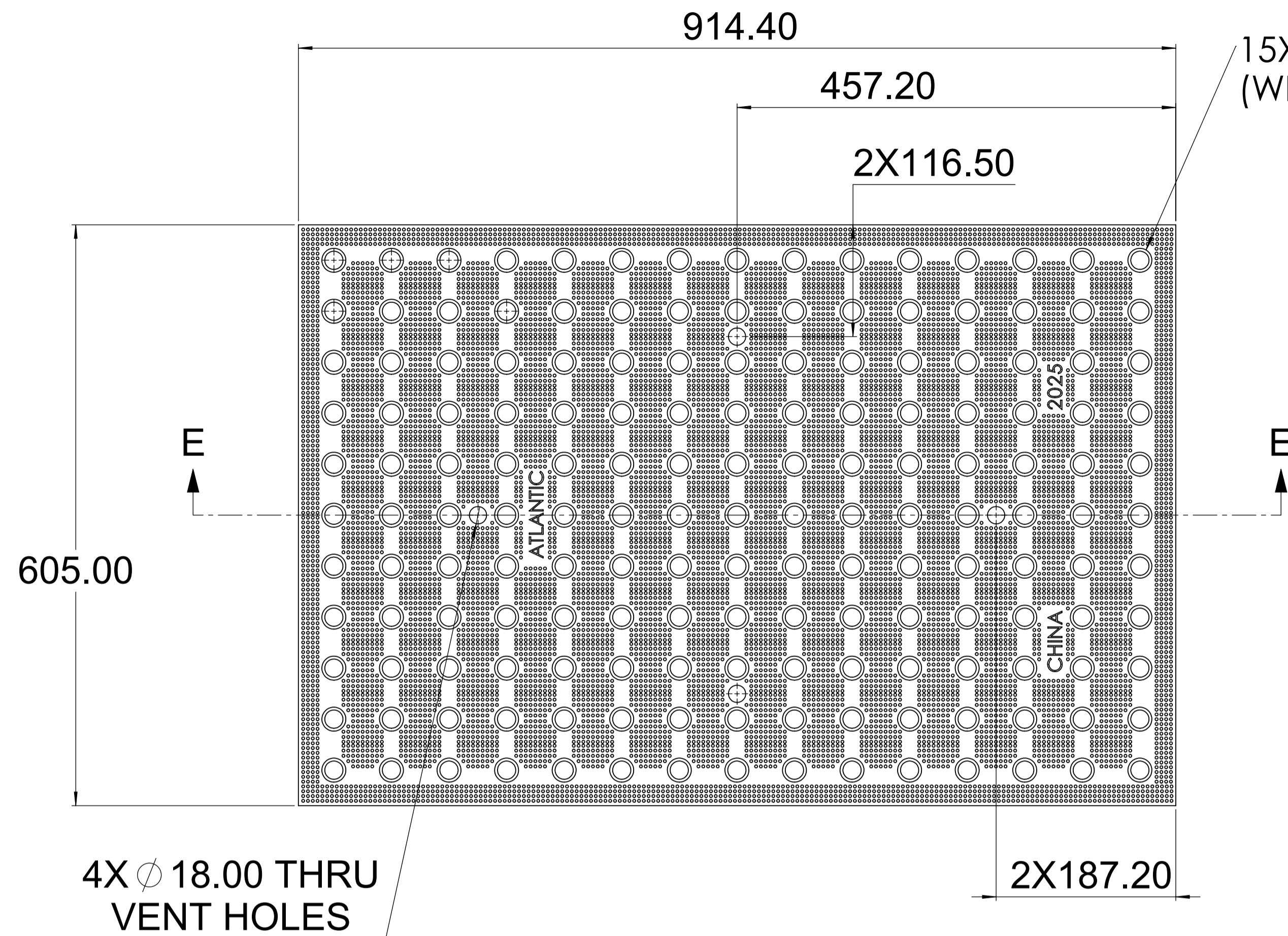
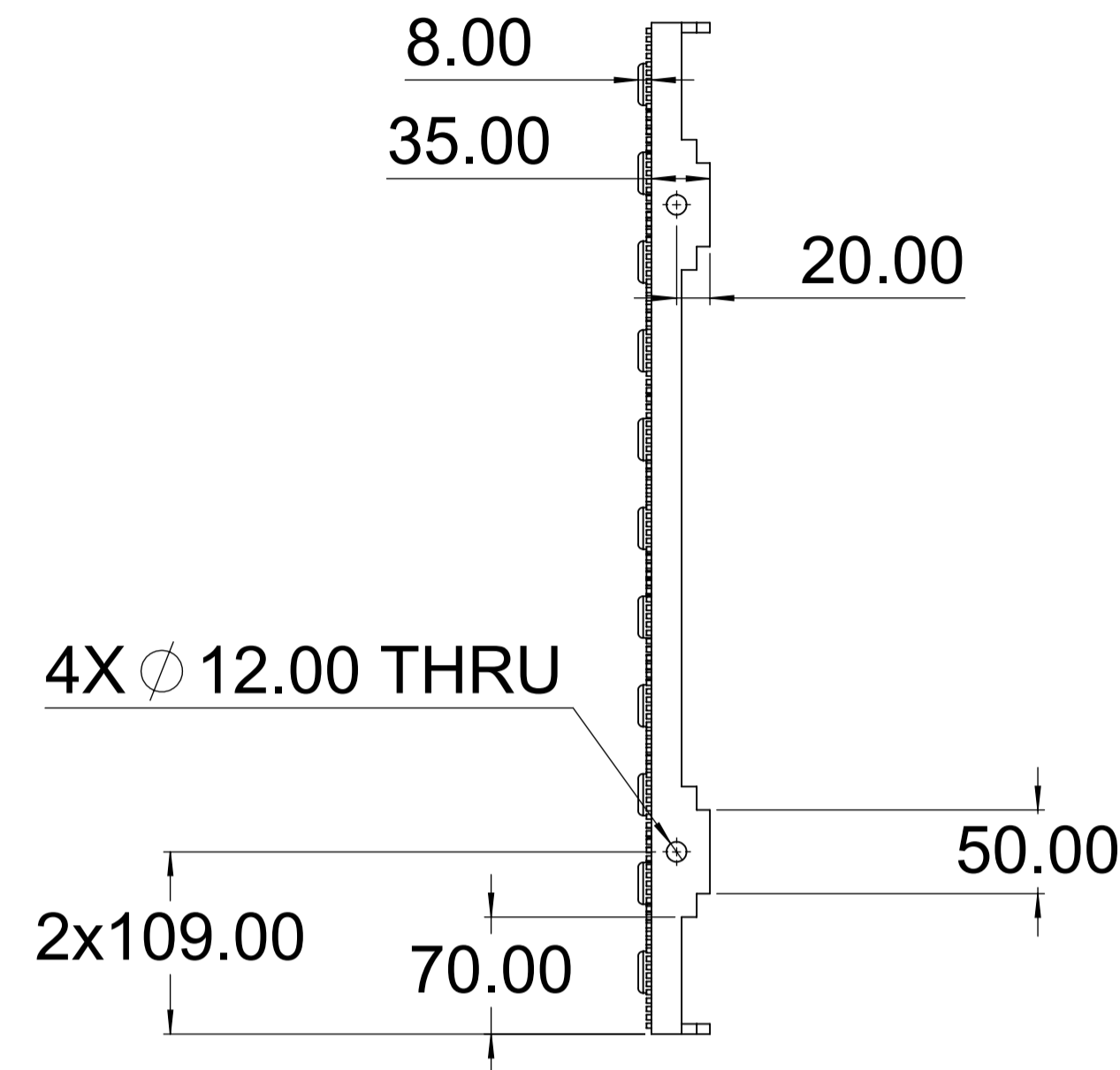
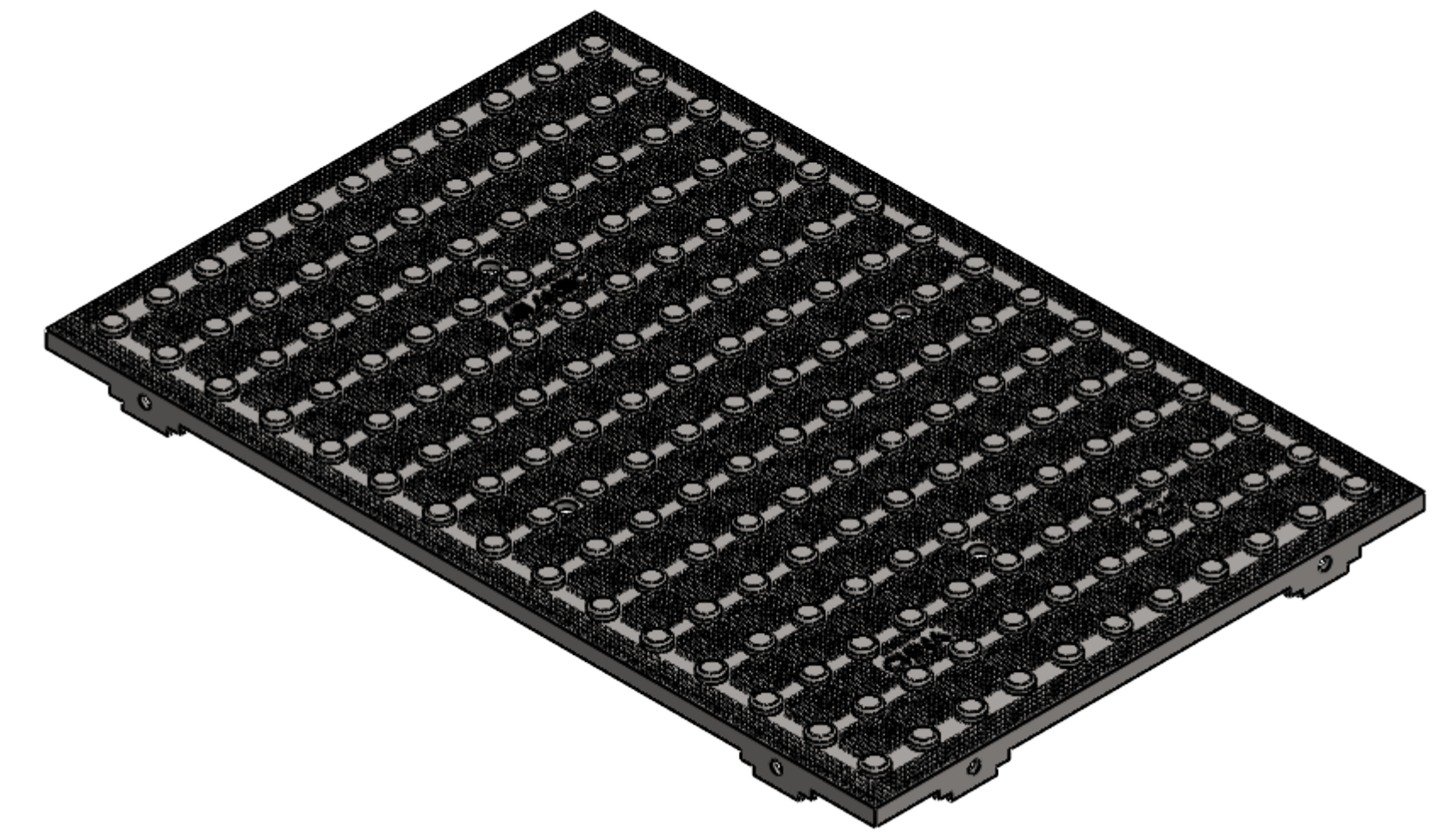


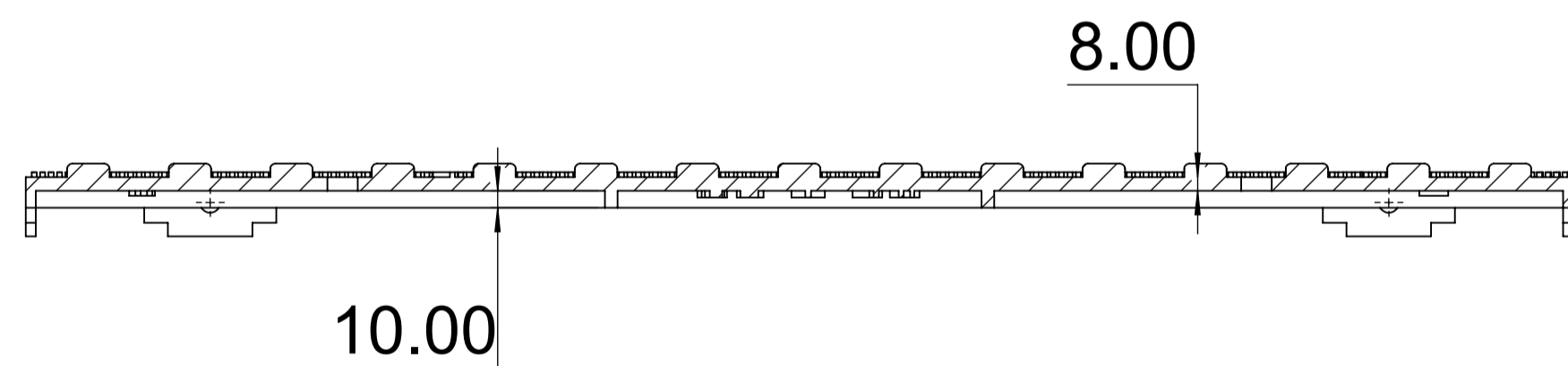
NOTE : 1) KINDLY FOLLOW 3D DATA FOR UNSPECIFIED DIMENSIONS.
 2) REMOVE ALL SHARP EDGES, NO BURR & DENTS ARE ALLOWED.



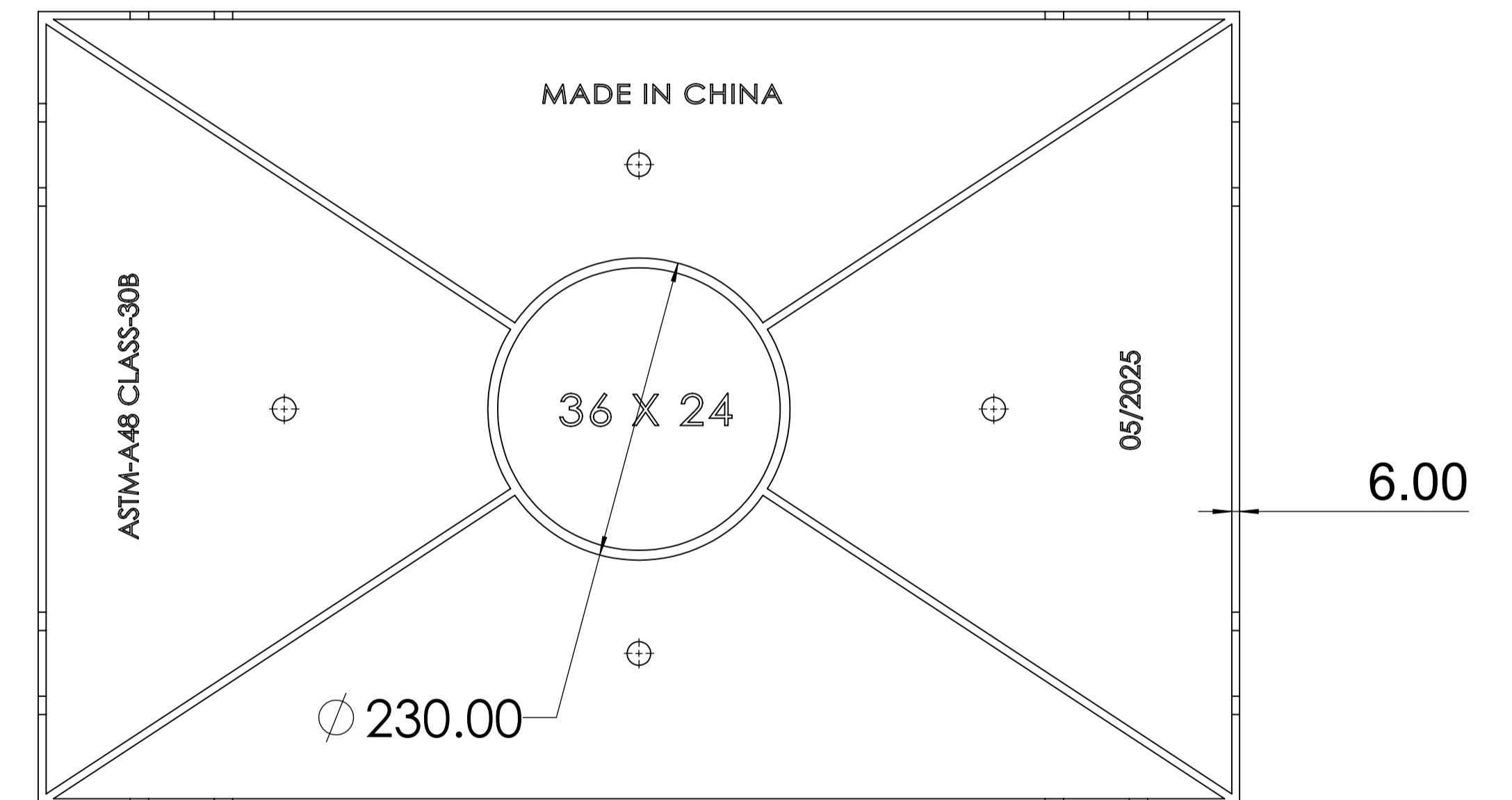
15X11 DOME EMBOSING
(WITH EQUAL SPACING)



4X Ø 18.00 THRU
VENT HOLES



SECTION E-E



UNLESS OTHERWISE SPECIFIED:
 DIMENSIONS ARE IN MILLIMETERS
 TOLERANCES:
 LINEAR: ± 2 MM
 ANGULAR: ± 1°
 BRK/FILE SHARP CORNER: 1 MM MAX
 SURFACE FINISH: 20 - 50

THIS DRAWING IS THE PRIVATE PROPERTY OF
 "ATLANTIC CORPORATION LIMITED"
 AND CAN NOT BE USED DIRECTLY OR INDIRECTLY
 WITHOUT THE WRITTEN PERMISSION OF THE COMPANY.
 ALL LEGAL RIGHTS RESERVED.

**ATLANTIC CORPORATION
 LIMITED**

NAME	SIGNATURE	DATE
DRAWN ATLANTIC		20-06-2025
CHK'D		
APPV'D		
MFG		
Q.A		

HEAT TREATMENT:

MATERIAL:
 ASTM-A48 CLASS-30B

PROJECT:
 06

PART NAME:
 36X24' DETECTABLE PLATE

PART NUMBER:
 11

REVISION:
 A

REVISIONS

REV.	DATE	DESCRIPTION	EARLIER WAS	CHANGED TO
A	20-06-2025	DRAWING RELEASED	INITIAL RELEASE	INITIAL RELEASE

DO NOT SCALE DRAWING

WEIGHT:

SHEET 1 OF 1
 SCALE: 1:4

SIZE: A1